



Summer Worship Schedule - 9:00 am

10:15 Fellowship on the lawn
Memorial Day thru Labor Day

Clip and Save

It's Time to Change -

We Have New Email Addresses!

*Well, I've been afraid of changing
'Cause I've built my life around you
But time makes you bolder
Even children get older and I'm getting older too*
Stevie Nicks - *Landslide*

Tell yourself -"change is good for you", then post the following email changes and additions near your computer (and hum a little "Landslide!").

Kris - office@bethluth.com
Tonie - editor@bethluth.com
Donna -business@bethluth.com
Greg - books@bethluth.com
Treasurer (Holly) - treasurer@bethluth.com
Nursery - nursery@bethluth.com
search committee - job@bethluth.com
call committee - yfejob@bethluth.com



Bethlehem Star

Bethlehem Evangelical Lutheran Church
The Rev. Bruce Kuenzel, Pastor
The Rev. John Bell, Youth & Family Ministry
2390 North Road, Los Alamos, NM 87544
Phone (505) 662-5151

RETURN SERVICE REQUESTED

POSTMASTER:
Please deliver between
June 1 and June 5, 2011

Non-Profit Organization
US Postage Paid
Los Alamos, NM 87544
Permit #44



Bethlehem Star

Years of Church and Family

Bethlehem Evangelical Lutheran Church

Volume 57 no.5

Bethlehem is 60!

Let's party!!

This year Bethlehem celebrates our 60th anniversary -- 60 years of worship, service, learning, and caring together. So mark off Friday-Sunday, August 26-28, on your calendar for a great celebration weekend. The weekend will feature a sock hop, a prayer vigil, an open house, a gala dinner, a special rededication worship service, and a family picnic. This is an important milestone in our life as a congregation, and we hope one and all will join in celebrating the past and looking with joy toward our future as the family of Bethlehem. If you would like to volunteer to help with any of the many tasks that will make the weekend happen, please contact Kathleen Hoversen, Connie Cobb, Carol Estes, or Bob or Michelle Thomsen (or just let the office know). Rejoice in the Lord always!

June/July 2011

What's Inside
Council Corner 2

Birthdays, Thank you,
& Announcements 3

Changes in the Office 4&5

Y & F News and
VBS & Day Camp 6-7

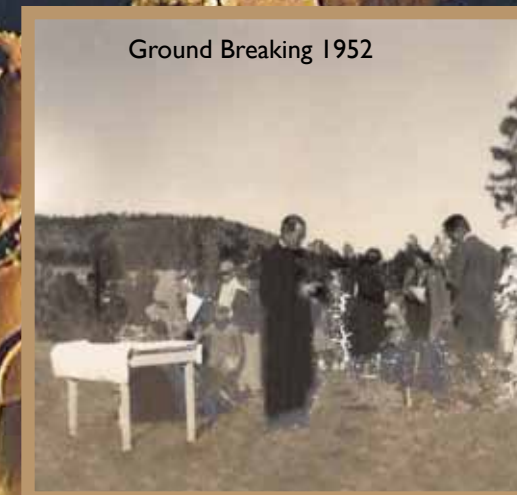
Stars of Bethlehem 8

Family Preacher Feature:
"Season of Changes" 9


Focus on Ministry
Fellowship 10

Postscript: "Youth and Family
Director Search & Call
Committees" 11

Inserts:
June/July Calendar
Supplement - Blessed to Be a
Blessing
VBS & Day Camp Registration
Forms



Ground Breaking 1952



Council Corner
 "Words of Wisdom"
 from Laura M.
Council Corner
Staffing Update

As you were informed in a letter from the Council in March, implementation of our approved staffing configuration is moving forward. Here's an update.



As of April 1, Donna Richardson became our Office and Business Manager, and Tonie Dunham remained our Communications Editor with additional responsibilities for our bulletins web site. In early May, the Personnel Committee and our Office and Business Manager conducted interviews for our Administrative Assistant and Bookkeeper, both part-time positions. Kris Frain has been hired as our Administrative Assistant and Greg McIntosh has been hired as our bookkeeper. This summer, the Personnel Committee with help from the Spiritual Gifts Ministry Team will be working on the job description for the part-time Spiritual Gifts/Lay Ministry Coordinator with plans to hire someone around the end of the summer.

Our Call Committee, elected to seek a Youth, Family,

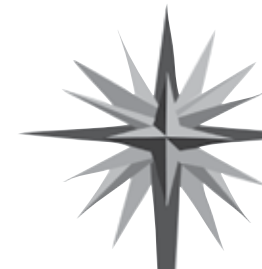
and Education Director, is near completion on the Ministry Site Profile, which will be presented to the congregation before submission. Meanwhile, our Search Committee is advertising throughout the country for our second interim Youth and Family Director. Thank you to the Search Committee (Haley Bridgewater, Ethan Clements, Tonie Dunham, Emily Hopkins, Jennifer Hopkins, Kate Klose, Pastor Kuenzel, Joyce Rybarcyk, Ethan Stam) and especially their leader, Edie May Phillips! We hope to bring our next interim Youth and Family Director on-board in mid-summer to have some overlap with Pastor Bell, who is with us through August.

The staff budget is being updated with all of our staffing transitions. A copy of the entire budget including the updated staff budget will be placed in the binder in the library that contains the Council minutes. Our Office and Business Manager is monitoring our staff budget to ensure staffing transitions are accommodated.

Please pray for our Search and Call Committees as we search for both an interim Youth and Family Director and a permanent Youth, Family, and Education Director.

Bear one another's burdens, and so fulfill the law of Christ.
 Galatians 6:2

Blessings my friends,
 Laura McClellan



Postscript
Youth and Family Director
Search & Call Committees
David & Edie May Phillips

It has been a while since we played a game of hide and seek. How about you? Right now, we are in the middle of a really difficult game of hide and seek. Somewhere out there is a great person that can help us fill the transition and become our Interim Director of Youth and Family Ministries; and also out there is another great person that can fill that role permanently. We need to find those people! Fortunately, we have help in the form of two great committees.

The **Search Committee** is charged with finding an interim director consists of: Haley Bridgewater, Ethan Clements, Kate Klose, Tonie Dunham, Emily Hopkins, Jennifer Hopkins, Edie May Phillips, Joyce Rybarcyk and Ethan Stam.

A formal **Call Committee** to find a permanent director consists of: Jeff Click, Stephanie Frankle, Pastor Kuenzel, Jane Lloyd, Laura McClellan, Christina Moore, David Phillips, Emma Phillips, Laurel Roberts and Kathy Willcutt.

So what's the difference? In our search for a permanent director, the **Call Committee** is going through the formal ELCA pastoral call process in order to include ordained and rostered personnel in the search. Although we will not be limiting ourselves only to a formal call, the only way to include such people is to undertake the formal synod call process. Because this process can be lengthy (12-24 months), it was decided to also look for an interim director that could fill the time between

the end of Pastor Bell's call here and the hiring of a new full time director. The initial idea for filling such a short duration position was to look for a young person, possibly fresh out of college and wanting to work in a youth and family ministry role. Someone who could work with our Youth and Family ministry team to bring some fresh ideas and energy, and at the same time, give that person some excellent experience in a challenging economy.

The interim position has been posted at every ELCA College/University, it is posted at several Youth and Family Ministry web sites, and about 100 letters have been sent out to various outdoor ministry programs within the ELCA. Additionally, there are some other places where we are in the process of posting the job - such as campus ministry programs around the country.

The **Call Committee** has nearly finished the required Mission Site Profile (MSP) and complimentary formal job description; and is preparing to bring those to the congregation for comments in June, and then to the Church Council for approval. At that point the MSP will be submitted to the Rocky Mountain Synod and they will begin to present the call committee with possible rostered candidates.

Our goal is to put someone in the interim position as soon as possible; but we do not want to fill the position for the sole purpose of filling it. Our hope is to have someone who is able to start this summer while Pastor Kuenzel is on sabbatical. It's always nice to have some help, so if you think you might know of someone who would be interested, please let us know! We would also welcome any prayers that you can send our way!

Edie May and David Phillips

Committee Chairs



The **Bethlehem Star** is published ten times annually by:
Bethlehem Evangelical Lutheran Church (ELCA)
 2390 North Road, Los Alamos, NM 87544
 (505) 662-5151; fax (505)662-6346; Office - office1@bethluth.com
 Publications - office2@bethluth.com

Staff- Pastors: Bruce Kuenzel and John Bell; **Office/Business Manager:** Donna Richardson; **Administrative Assistant:** Kris Frain; **Editor:** Tonie Dunham; **Director of Music:** Paula Nichols; **Bookkeeper:** Greg McIntosh

Officers: President: Laura McClellan, Vice-President: Michelle Thomsen, Secretary: David Moore, Treasurer: Holly Vigil, Assistant Treasurer: Dave Carver, Financial Secretary: Gregg Giesler, Assistant Financial Secretary: Karl Meier,

Church Council: *Care & Prayer*; George Anderson; *Youth & Family*, Sophia Click; *Worship & Music*, Debbie DeSimone; *Spiritual Gifts*, Rob Dickerson; *Facility*, Jerry Ethridge; *Youth & Family*, Jeff Lloyd; *Evangelism*, Glenn Magelssen; *Finance & Stewardship*, Laura McClellan; *Outreach*, Jackie Paris-Chitnavis; *Fellowship*, Rick Posada; *Christian Education*, Michelle Thomsen

Office Hours Monday -Thursday 9:00am - 4:00pm, Friday 9:00am - 1:00pm
 Staff Meeting every Tuesday 2:00pm - 4:00pm - beginning in July Staff Meetings will be held at 10:00am, Tuesdays

Deadlines **Bulletin** - Wednesdays 3:30pm **Newsletter** - 15th of the month

Emergency Contact Summer 2011- Pastor John Bell (cell, 505-500-5951)



Focus on Ministry

Fellowship

by Anna Caspersen & Sue Henninger

They devoted themselves to the apostles's teaching and fellowship, to the breaking of bread and the prayers.

Acts 2:42

Our church is blessed with wonderful cooks and there is always good food at any fellowship event. The donuts, coffee and hot chocolate served between services have rescued many from hunger pangs on a rushed Sunday morning. Our potlucks are famous and the different types of soups and breads that arrive in pots and loaves for our Lenten Soup luncheons and dinners are astonishing! The monthly Fellowship luncheons are delightful with clever decorations and the fare worthy of any 5 star restaurant. The thoughtfulness of a meal served following a funeral comforts and blesses family and friends. Many other celebrations in the church bring us together around a table.

Behind the many fellowship activities is a small, hardworking team that ensures these events go smoothly. The members serve others by working behind the scenes, quietly and efficiently, following treasured Lutheran tradition.

For any gathering tables are set up for serving and eating with dinnerware, flatware and other items readied. Coffee, of course coffee, and other beverages prepared, the meal presented for serving; then the clean-up. This loving work is not for the fragile, however, the Fellowship Ministry Team is especially grateful for the new light-weight tables that make their jobs a little easier..

Keeping the "warming" kitchen clean and the store-rooms supplied with all the necessities needed for the many church functions is also a major role within the Fellowship Ministry. Currently the purchase

of our paper products in bulk is being researched in order to keep down expenses. As part of Bethlehem's legacy, many other groups use our facilities on a regular basis. While they do not use our paper products, they often need to use our soap and towels, with permission our china and coffee pots. This is a blessing that we have been able to give our community, and along with diligent review of everyone's needs, we can hopefully continue to be a blessing here.

If you look up the word *fellowship* in an expanded dictionary you might be surprised by its many definitions. Among these definitions are *communion* and *congregation*. When we meet Christ at the altar table for the bread and wine we are a *congregation in communion* with one another and with God.

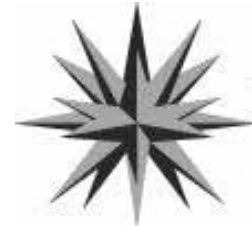


Have you ever wondered who worked behind the scenes when the disciples gathered in the Upper Room? Maybe it was the original "Fellowship Ministry Team!"

As we like to say around here -"Many hands make light work!" Each of you is encouraged to consider your Spiritual Gifts; perhaps a place on the Fellowship Ministry Team is just what is in order for you. If

you aren't available for a Ministry Team "member" commitments want to help with some of the events sponsored and served by the Fellowship MT, you will be more than welcomed. As you can tell, you will easily be given many loving tasks to do with the many loving members of your Bethlehem Family.

Contact co/chairs Anna Caspersen or Sue Henninger to become a part of, or help with, this vital Ministry Team; or just show up and pitch in! We really have a lot of fun together.



We Can't Thank People Enough! Thank You:

For all who fold our bulletins each week.

Phyllis Holland - Coordinator

For those who provide communion to our home-bound.

Phyllis Holland - Coordinator

For all who provide food for our home-bound and temporarily disabled family members :

Karen Meier: Coordinator

For all who prepared the May Star for mailing:

(Note: a coordinator is needed for this task. Please call Donna or Tonie in the office.)

Prayer Shawl Ministry Team

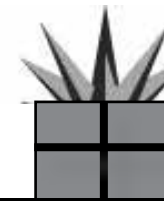
After 9 years, at the end of the month, I have decided to step down as the chair person of the Prayer Shawl Ministry. I want to personally thank all of you who have made prayer shawls and those who have delivered them for me. During this time we have given out 249 prayer shawls and 17 chemo caps. Thank you all for being a part of this loving ministry. God's Blessings on you all, Marge

Editors Note:

Thank you Marge for your faithful service to this ministry over the years.

We would very much like to keep this vital ministry going. A number of knitters, crocheters, and quilters are willing to provide prayer shawls. We are looking for one or more persons who could be the contact and distribution coordinator(s). We would also like to create a data base of anyone who would commit to making one (or more) prayer shawl in a year. Prayer shawls can be made out any number of materials, so you don't have to know how to knit!

If you are being called to serve in one of these ways, please call Tonie in the office at 662-5151.



Happy Birthday to You!

This feature has been removed for the web view in order to protect our members privacy.

More about the Garden Party!

The date is June 28th - The theme is Patriotic! 6:00 PM

So plan to wear your RED, WHITE, and BLUE. Of course hats are still appropriate.

This year in lieu of party favors (who really needs one anyway?) a donation will be given to the USO, in keeping with our "Patriotic" theme. A donation basket will be present if you would like to make an additional contribution. So ladies, start planning now to begin your Independence Day celebration early by attending the Garden Party, held this year at 4 Agila Ct, Whiterock, in Tonie's garden. Email editor@bethluth.com if you would like to receive an emailed map to the address.



Changes at Bethlehem

Have you noticed a change in the Bethlehem offices and the staff?

*By Donna Richardson,
Office and Business Manager*

Have you noticed a change in the office? Perhaps noticed a little less green in the outer offices and a lot more green in the center office? A new voice on the phone? A new email or two? A new face or two in the office during the week? The office staff and office locations are definitely in a state of change. I would first like to welcome our two new office staff who started working in mid May. Please welcome Kris Frain, our Administrative Assistant, and Greg McIntosh our bookkeeper (NOT to be confused with our ongoing financial secretary Gregg Giesler). We are so fortunate and blessed to have both join our team. I also want to let you know, in case you missed the announcement in the Parish Notes, that Holly Vigil has graciously volunteered to be Bethlehem's Treasurer

Where are we all sitting now-a-days? Tonie has moved into the center office, bringing a flash of green to this space. Kris has moved into the outer office space where Tonie was located. She has not finalized the color scheme, but I've heard a mumbling or two about orange. I think orange and pink might work. Greg will be working at the work station in the conference room several hours each week. Greg may have to work on a color scheme there.

Joking aside, I want to introduce to our Bethlehem family our new office staff and provide information to you on the roles and responsibilities of the office staff as part of Bethlehem as we serve God and our Church.

Kris will be handling all of the day to day office and administrative tasks. Talk to Kris for worship server schedules, daily office questions, prayer requests, facility use requests, congregational communications, database changes, and all of the other weekly items that happen in our busy church office. After a pre-planned trip to see her daughters in June Kris will be in the office Monday through Friday from 9 a.m. to 1 p.m. Hers is the voice you will be hearing on the phone when you

call! Kris's email is office@bethluth.com. Please welcome Kris to our staff when you are in the office.

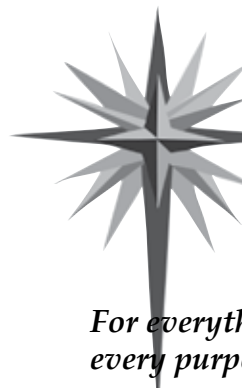
Greg will be in the office one to two days each week to make sure the bills are paid, your faithful employees are paid, the government is paid, and our financial transactions are properly accounted for. He will also be handling the daunting job of closing books each year. Greg's email is books@bethluth.com. Please welcome Greg to our staff when you get a chance.

Holly will ensure the accuracy of our Churches books and report to council and the congregation monthly and annually. Holly will not hold "regular" office hours, but don't hesitate to contact her if you have questions. Holly's email is treasurer@bethluth.com.

Tonie will continue to focus on all of Bethlehem's publications. She is the creative side of our staff. She publishes the weekly bulletin, the Parish Notes, Prayer List, the Bethlehem Star (monthly news letter), and will be taking on a new responsibility of oversight and updates to the new Bethlehem website. Note – Tonie hopes that we will have the new website up sometime during the month of June (Special thanks go to Kirk Weisbrod who has been creating our new site in his limited spare time). Tonie will continue to work part time and plans to be in the office Tuesday thru Thursday. Tonie has a new email address – editor@bethluth.com.

My duties will shift a little and I will be focusing on managing the office and business aspects of the church. I will handle all of our daily business needs to maintain sound administrative, business, and financial practices and record-keeping. I will be responsible for business operations and daily office operations. I will be in the office Monday through Thursday until 4:00 and will back up Kris after she leaves at 1:00 until the office closes. I will also be in the office until 1:00 p.m. on Fridays. My new email is business@bethluth.com.

(continued on page 5)



Family Preacher's Feature

*Season of Changes
Pastor John Bell*

For everything there is a season, and a time for every purpose under heaven

Is there anything better than a sunny eighty degree day, punctuated with a lazy breeze? It would not be a hard sell to trade all of our national holidays for the ability to shut down the office to enjoy each occurrence of perfect weather. In the nether regions around the Great Lakes, on days when it is cold enough for spit to freeze before it hits the sidewalk, people have been known to dream of a place where the breezes blow at seventy-five degrees year round. Such places exist, of course, but would one really be better off living there? Perhaps there is something innately human that needs change. Recent trends in physical training suggest that it is better to exercise with intervals of varying levels of activity. Physical fitness requires a balance between strenuous activity and rest. Perhaps the same is true of our spiritual health.

In June, the calendar shifts from spring to summer. But as the winds die down and the scrub oak springs to life, people in these parts are prone to other changes. Some of these transitions are regular and cyclical; heavy school and work schedules give way to weeks of rest. Yet other shifts in our life will leave us changed forever. Families will move to new jobs and communities. Recent graduates will begin new responsibilities and relationships, never returning to the carefree innocence of youth. It is a time both of promise and grief. Whether or not it is welcome depends on attitude and perspective. Fortunately, we worship a God who has created each season of life and walks with us through each. Our faith helps us to recognize that, "this is the day the Lord has made," to which we can rejoice and be glad.

Many changes are in store for the people of Bethlehem this summer, changes for which we can rejoice and be glad. For our youth, school year activities have ended and kids are invited to move up to the next grade level of activity. Rising seventh graders are invited to begin attending middle school

events and rising ninth graders may come to summer high school events. Many of our youth are looking forward to a week at Rainbow Trail Lutheran Camp.

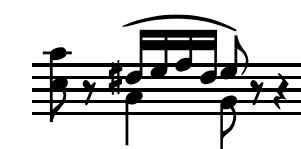
As Pastor Kuenzel spends his summer on sabbatical, there are many transitions in store for our staff. As I take over the pastoral responsibilities for the summer, I will also be involved in my own call process; preparing for my departure at the end of August. Several new administrative staff positions have recently been filled and the search committee is working diligently to have a new youth person on board by the end of the summer.

As we change to our summer worship schedule, we will be introducing liturgical music from setting six in our hymnal. These musical components will be woven into our summer worship one at a time over the course of the summer.

I thank you for the seasons we have shared together over the past year. I came to assist in the healing process and allow the congregation time to structure a new ministry team. I think that great progress has been made on both counts. Over the course of this year we have learned much and been enriched by our time together. As my time here draws to a close, we both can look forward to a great new season of ministry.

May God's blessings continue,

Pastor John



Music Notes

Summertime is a great opportunity to express yourself musically! If you sing, play an instrument, or both - sign up to provide "Special Music" for a worship service this summer. The sign up sheet is posted on the Ministry Opportunities bulletin board.

For additional information or help with music or accompaniment talk to Paula!



Stars of Bethlehem

Have You Met... Yet?

by Lyn Olson

Sue Kinkead

Sue was brought up in Castle Rock, Colorado. She studied nursing at the University of Kansas and worked for several years at Denver General Hospital. Then she joined the Air Force. In 1984 her family moved to Los Alamos, at that time she chose to stay home with her 2 young daughters. When she returned to work she decided to change careers and got a job at the Laboratory. She went to school at the University of Phoenix to get a masters degree, but also taught herself how to build a data base. She now works in the office of the Chief Information Officer.

Sue's two daughters are now grown; Heather is studying in San Diego and Shannon works here at the Lab.

Her interests include music, and she's studying clas-

sical guitar; she also likes to paint in watercolor for fun. She finds joy in taking care of people and is interested in becoming a Stephen Minister. She's well rounded in her interests and her outdoor activities prove that. She rides a motorcycle and has taken up scuba diving in the Caribbean. Someday Sue would like to go to Australia.

Friendships are really important to her, she believes that life is about relationships. Sue said that the reason she joined Bethlehem is because of the sense of joy she feels here. She has already volunteered to be a lector and a deacon. Welcome Sue to Bethlehem when you see her.




Changes in the Office

Now we're cookin' Bethlehem!

The office hours of the church will continue to be from 9:00 a.m. to 4:00 p.m. Monday through Thursday and 9:00 a.m. to 1:00 p.m. on Friday. Stop by and say hello to all of us when you get a chance. I would like to thank each and every one of you for your support and care of our office staff. You are a blessing to us and we will strive to serve you, the Church, and God. Grace and peace, Donna.

Kris Frain Our Administrative Assistant



The Frain family arrived in Los Alamos from Michigan in 2004 when Mike was hired at Northern New Mexico College. He is an Associate Professor and the program director for radiography. They have three daughters and Mike has a son, Phil, who lives in Fort Wayne, Indiana with

his wife Rebecca. Phil works as a data research analyst and their daughter-in-law is a rocket scientist. Oldest daughter, Hannah, is completing her associate degree from Grand Rapids Community College (GRCC) in Michigan and transferring to a university to complete a higher degree in Graphic Arts. Rachel has been living in Michigan with Hannah and is also attending GRCC. However, Rachel is moving back to New Mexico in August because she misses her twin - Sarah. (...not her parents just her twin!) Rachel and Sarah will both attend the criminal justice program at Northern. Also members of the family are their two dogs, Daisy, a six year old female, Golden Retriever mix and Aksel, a one year old male, Norwegian Elkhound mix.

In addition to working part-time at Beth-

lehem, Kris is full time student in her third year at Northern pursuing a bachelor degree in business administration. She enjoys finance and accounting classes so her goals and time lines have been extended to include those interests. School doesn't leave a lot of free time but she enjoys walking her dogs, knitting, reading, and of course spending time with her husband or daughters is precious. She loves the blue skies, sunshine, and bird song of New Mexico; they make her heart sing with joy and when driving through the mountains she is reminded that we do indeed have an awesome God!

She has worked in various positions in the medical field and although many aspects have been wonderful and very fulfilling; Kris felt called to apply for the administrative assistant job at Bethlehem. Kris says, "I look forward to simple pleasures like preparing the sanctuary for the Sunday worship service and prayer at staff meetings. Lastly, I want to thank you for the opportunity to come to know and serve the Bethlehem family."

Meet Our New Bookkeeper



Greg McIntosh has lived in New Mexico most of his life and after visiting friends in Los Alamos a few times, chose to move here last year. He graduated from NMSU

with an Accounting degree and had several years experience in that area before semi-retiring. He loves living here and is excited to get more involved in his new community.

Holly Vigil Our Treasurer



Holly Vigil has agreed to become our new Church Treasurer! The Treasurer is a Council appointed position. It makes sense that someone as familiar with Bethlehem as Holly, would step into this spot. Most of you know Holly, she grew

up at Bethlehem (Holly Olson), married and raised her two children here. She and her husband, Robert, are often the tallest people in the room! So look for that tall blonde and thank her for taking us on!

Thank you, thank you, thank you...

You probably won't believe this but our attempt to keep a listing of everyone who has helped around here each month hasn't worked out so well! We don't always get the names of who to thank, and memories are faulty and someone is always inadvertently left off the list. So while this list is an attempt to thank all of you for your generous time spent caring for Bethlehem, we know that it is incomplete. For that reason we are planning to suspend listing these thank yous in the future. Please know that what ever you do, for your Bethlehem family and church, is always appreciated and noticed by someone, and we really can't do without you!

Thank you to those helping with Building Kindness in April and/or May; **Pastor Bell, Mark Dunham, Alex Lloyd, Nate Mara Tom Marshall, Laura McClellan, David Phillips, Ester Rand, Haru Takeda, Michelle Thomsen, and Kathy Willcutt.**

For providing food for the Graduating Senior reception and helping to clean up and set-up: **Lori Port, Donna Richardson, Carol Estes, Paula Nichols, Cynthia Kuenzel, Thelma Hahn, Verlène Stamm, Leslie Wallstrom, Tammy Lu Olinger, Joyce Rybarcyk, Lynn Olson, Beth Bowman, David, Nate, Emma and Elyse Phillips**

For help with the Easter brunch: **Robbie Mietz, Isabelle Coons, Haley Bridgewater, Emma Phillips, Nate Phillips,**

Anna Zerkle, Donna Richardson, Emily Rybarcyk, Larry Rybarcyk, Ethan Clements, Ethan Stamm, John Stamm, Verlène Stamm, Henry Stamm, Pastor Bell John, Jennifer, Emily, Katie and Sally Hopkins, Jane Clements, Brad Clements, Nathan Clements, Betty Myers, Beth Bowman, Carol Estes, Mark Dunham, Dave, Tammy, Christina, and Tyler Moore, Bob and Michele Thomsen, Elyse Phillips, and David Phillips

For help in the office and with mailings in April and /or May: **Wendy Schmidt, Marge Rich, Anna Caspersen, and Carol Estes.**

Taking dinner to St. Elizabeth Shelter in April and/or May: **Kathy Wilcutt, Thelma Hahn, Tonie Dunham and Mary Ann Hill.**

Spring work party thanks to: **Roland Caspersen, Jerry & Lore Ethridge, Gregg Giesler, Janet Hill, Joe Klose, Suzy & Ally Koehn, Bruce & Cynthia Kuenzel, Carol Mahan, Tom Marshall, Jim & Laura McClellan, Kareen Meier, Ellen Morris Bod, Betty Myers, David Phillips, Donna, Joe & Haylee Richardson, Larry, Joyce & Emily Rybarcyk, Jay Spoonheim, John Stam, Ralph & Marilyn Stevens, Harunori Takeda, Michelle thomsen, Todd Urbatsch, Allen & Carla Weiser, and Laura and Alex Wouters.**



Youth

Youth includes all our school age kids. This is the place to see what is going on with/and for them

and Family

Family includes YOU and you and you and you too

Ministries

www.bethluth.com

Youth Room Planning Event - Concert

Friday June 3rd 5:30-9:00 PM

Bethlehem Youth are getting a new youth room. Recognizing the importance of our youth ministries, council is working on a plan to give our youth a larger, updated, visible and centrally located gathering place. Space studies have been in the works for months, and now it is time for our youth to weigh in. Come help us plan renovations to the Old Fellowship Hall as we convert it into a radical new youth room. Your ideas will help shape youth ministry for years to come. Middle and High School youth are invited to join the Youth and Family MT for Pizza and Planning. Youth will then attend the concert at Ashley Pond at 7:00. Don't miss this event!



Day Camp Volunteers Needed

The Rainbow Trail Day Camp is coming June 27 – July 1. The week long camp for grades 4-7 is a joint effort between Bethlehem and Trinity on the Hill. This year's camp will be held at TOTH, but there are still opportunities for leaders from Bethlehem to volunteer. We are looking to fill the following positions:

Host families: We are looking for two households willing to lodge either a male or female pair of RTLC staffers for the week. Host families will be responsible for providing beds, showers and breakfast for their pair of counselors.

Hospitality Coordinator: We are looking for someone to recruit and coordinate volunteers to provide counselor lunches and suppers for the week.

Snack and Beverage coordinator: we need someone to recruit and coordinate volunteers to provide snacks and beverages for two snack times each day.

Arts and Crafts Assistants: we are looking for volunteers to help the Arts & Crafts coordinator in leading a craft (1 volunteer at two craft sessions each day).

Games Coordinator: we are looking for a volunteer to organize games during a 45 minute period each day.

Appreciation Coordinator: we need a volunteer to prepare thank you certificates for RTLC staff and volunteers.

Middle School and High School Youth Helpers: needed daily to help with guiding our kids along and sharing in the fun.

Please contact Pastor Bell at 662-5151 or 500-5951 if you are interested in serving in any of these capacities. Let your light shine!

REGISTER NOW!

VACATION BIBLE SCHOOL AND DAY CAMP

June 27 – July 1

Registration forms are included in this Newsletter on the *Youth and Family Board* in the Gathering Space. Your early registration helps us plan for a successful week. VBS is open to potty-trained children between the ages of three and nine. Day Camp is open to youth entering grades 4-7. Don't let your kids miss out on this week of fun and faith!

VBS Needs You!

Mark Your Calendars!! Vacation Bible School will be June 27 – July 1 this year at BELC. The theme is *Pandamania* – Where God is Wild About You! The focus Bible verse is Psalm 139 and kids will learn that God is Wild about them!

As always we will need a lot of help to make this year's VBS a huge success! VBS is a great way to welcome people to our church and share God's love.

Help Wanted!!

Do you love preschool age kids? If so, we have the job for you. We need an adult to lead the preschool program for VBS.

We also need lots of Shepherds, and we need adults to bring goodies for our volunteers that week. Contact Mandy Ferran (672-9372 or scottandmandy8@msn.com) if you can help.

*** All volunteers must attend/ have attended Boundary Training. One will be offered June 12th here at BELC.

Way to Go Grads: Dillon, Johana, Katy, and Miranda - We're proud of you