



Winter Worship Schedule Begins September 11

8:15 am - Worship

9:40 am - Education Hour (beginning Sept 18th)

10:45 am - Worship

Rally Day and the Ministry Team Fair will take place September 11th, let's kick off the new year in style!

Did You Know?

At www.bethluth.com the weekly announcements, & Week at a Glance, are updated for you each week, and the Bethlehem Star, and calendar of events are available



Bethlehem Star

Bethlehem Evangelical Lutheran Church

The Rev. Bruce Kuenzel, Pastor
The Rev. John Bell, Youth & Family Ministry
2390 North Road, Los Alamos, NM 87544
Phone (505) 662-5151

Non-Profit Organization
US Postage Paid
Los Alamos, NM 87544
Permit #44

RETURN SERVICE REQUESTED

POSTMASTER:

**Please deliver between
Aug 27 and Sept 1, 2011**



Bethlehem Star

Years of Church and Family
Bethlehem Evangelical Lutheran Church

Volume 57 no.7

September 2011

**What's Inside
from your editor:** 2

**Birthdays, Thank you,
& Announcements** 3

Council Corner: 4

**FYI: Channel Graham, archi-
tect** 5

Y & F News: 6-7

Stars of Bethlehem 8

**Family Preacher Feature:
"Month by Month"** 9

**Focus on Ministry
Christian Ed** 10 & 11

**Inserts:
Sept/Oct Calendar, Tables of
8 postcard, 50th year Cam-
pus Ministry invitation**

BETHLEHEM 1951 AT THE GIRL SCOUT'S LITTLE HOUSE



1953



1963



2003

Breaking Ground for 60 Years

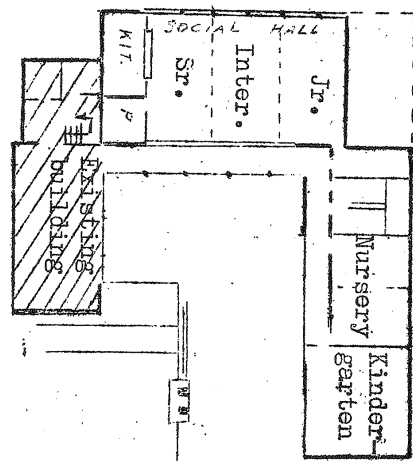


from your editor:

Tonie Dunham digging around in the archives

Did you know that I am the resident expert? I come by this honor two ways; I am the oldest (in age) member of the staff, and of the people hanging around the office on a given day, I'm the one that has the longest

history here, usually. Therefore, whether one asks me directly, because of my resident expertise, or I just stick my nose into your business, when it comes to matters of history and this church I've been taking time to get better acquainted with what I don't know, share what I do know, and redirect, in an educated manner, what I'm iffy on. While helping various teams on the 60th Anniversary Committee find things around here I've had the opportunity to dig around in the archives. There is some fascinating stuff in there and I'd like to share some with you. So "stuck in" here and there throughout this newsletter are a few tidbits of our history. I hope that you will enjoy it as much as I have.



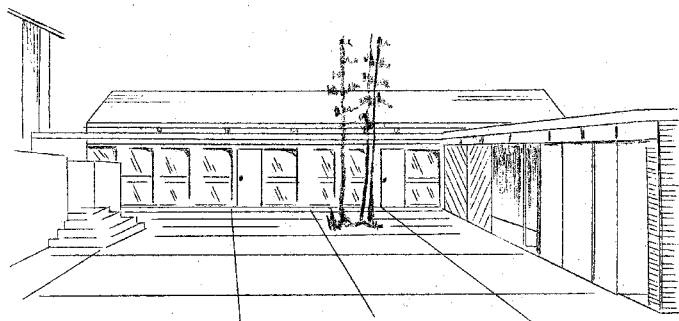
BETHLEHEM VOTES TO BUILD

The congregation voted on May 19 to accept the \$86,493 bid of Cillesen Brothers to build the educational unit. The amount was nearly \$5,000 more than had been anticipated when building plans were started in 1959.

A question was raised at the congregational meeting as to whether the cost could be reduced by eliminating part of the building. The answer was given by Mr. Eldon Christensen, the chairman of the building committee, that several features had already been abandoned to bring the bid in at as low a figure as possible. One room, which was to have been a stage, was deleted, ceramic tile in the restrooms was changed to vinyl, the parking lot would not be paved, and plastic folding doors were replaced by good quality but much cheaper wooden doors. The only way to bring the cost substantially

lower would be to cut out another room. To do that, the chairman said, would necessitate continuing to rent Mountain School for some classes and that would defeat the purpose of the new building. Mr. Gene Eyster, another member of the building committee, said the unit we are planning is not a plush building. It will be adequate and respectable but not luxurious.

The congregation voted to finance the extra cost by a drive to continue the special giving to the building fund through June 1964.



Every Member A Lifelong Learner

- is the goal of BELC's Adult Education program. Adult participation is an indicator of church health. Bethlehem adults participate by helping with Sunday School, attending adult classes, helping with the youth, and myriad other roles. Bethlehem has a solid core of adult education with classes continuing this fall, and we are looking to grow that participation significantly.

When I [Todd Urbatsch] was visiting Christ the King Lutheran Church in Couer d'Alene, Idaho, [last month], their Bible Study between services had eighty people! Now, I imagine that they have their own concerns, such as getting back that "small-group feel" and how to bring in people other than just the old-timers (my cousin calls their early, traditional service, the "Q-Tip Service" because of the neatly aligned rows of white-haired people!), but they certainly had the numbers. Please join one of our classes this fall. Let's strive not just for numbers, but meaning and agelessness, as we study and hear God's Word. If there's another time during the week that would work better for you for a Bible Study Class, please let us know.

So adults - have you chosen your learning opportunity for this fall? There's an exciting lineup of classes on Sunday morning and 2 new midweek classes to choose from. In addition Daytime Bible Study will resume Tuesday mornings at 10:00 am beginning Sept. 6th

On Wednesday nights, if your need is to talk about current issues in the church, Joyce Guzik will lead a discussion one night per month on a topic from the Lutheran magazine. If your need is for a midweek in-depth bible study, Pastor Bruce will be leading a study of Romans the other 3 Wednesdays.

On Sunday morning, if your need is for an introduction to the bible with helps for different ways to read scripture, there's "Opening the Book of Faith" co-led by Michelle Thomsen and Isa Spoonheim. If your need is for an in-depth bible study, Charles Ferenbaugh will lead a study of The Sermon on the Mount. If your need is growing your devotional life, Lyn Olson will lead a book study of Philip Yancey's "Prayer: Does It Make A Difference?" If your need is to know more about Church History, John Stam will continue to lead the popular video series and discussion.

Why all the "need" talk? Because we all need to keep growing our faith all life long! As someone put it: To learn is to grow...to grow is to love...to love is to learn...to learn is to grow...to grow is to love...to love is to learn.....

CHOOSE A CLASS, AND LET'S GROW TOGETHER!

Men's ADVENTURE CAMP at RTL

Experience a weekend of faith renewal, fellowship and tons of fun! This action packed weekend is filled with rock climbing, hiking, fishing, mountain biking, high ropes, and archery! With activities for all skill levels led by experienced guides this is the perfect time to hone your skills or try something completely new.

Great food, rugged mountain scenery, and time with friends make this a time you won't want to miss! So gather a group of the guys from your congregation, or invite some from work and come out to this amazing weekend!

RETREAT DATES

September 15-18, 2011

RETREAT FEES

\$185 (Registration Deadline: September 6, 2011)

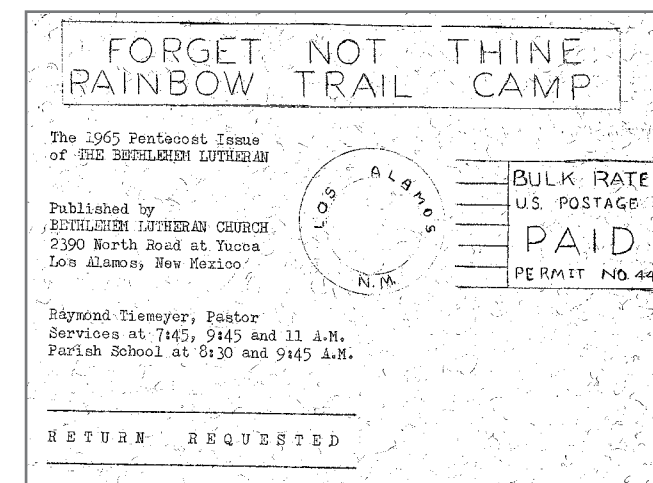
SPEAKER & BIBLE STUDY LEADER - PASTOR JOEL MARTYN

Pastor Joel is an avid fly fisherman, hunter, hiker and mountain biker. He will be playing with us throughout the weekend and leading inspiring worship and challenging conversations He encourages everyone to take an active role in worship leadership, discussions, and sharing their adventure activity expertise with others.

Bob Thomsen, Alex Wouters, Pastor Bell, and Joe Richardson attended last year, and would be happy to personally encourage any other Bethlehem men to attend the weekend and answer any questions.

Additional questions? Contact Joe Richardson by e-mail at nuclearfamily@earthlink.net or by phone at 662-6972.

<http://www.rainbowtrail.org/retreats/mens-retreats/>



The **Bethlehem Star** is published ten times annually by:
Bethlehem Evangelical Lutheran Church (ELCA)
 2390 North Road, Los Alamos, NM 87544
 (505) 662-5151; fax (505)662-6346; Office - office@bethluth.com
 Publications - editor@bethluth.com

Staff- Pastors: Bruce Kuenzel and John Bell; **Office/Business Manager:** Donna Richardson; **Administrative Assistant:** Kris Frain; **Editor:** Tonie Dunham; **Director of Music:** Bookkeeper: Greg McIntosh

Officers: President: Laura McClellan, Vice-President: Michelle Thomsen, Secretary: David Moore, Treasurer: Holly Vigil, Assistant Treasurer: Dave Carver, Financial Secretary: Gregg Giesler, Assistant Financial Secretary: Karl Meier,

Church Council: Care & Prayer, George Anderson; Youth & Family, Sophia Click; Worship & Music, Debbie DeSimone; Spiritual Gifts, Rob Dickerson; Facility, Jerry Ethridge; Youth & Family, Jeff Lloyd; Evangelism, Glenn Magelssen; Finance & Stewardship, Laura McClellan; Outreach, Jackie Paris-Chitnavis; Fellowship, Rick Posada; Christian Education, Michelle Thomsen

Office Hours Monday -Thursday 9:00am - 4:00pm, Friday 9:00am - 1:00pm
 Staff Meeting every Tuesday 10:00am - 12:00pm

Deadlines Parish Notes - Wednesdays 3:30pm Newsletter - 15th of the month

Emergency Contact- Pastor Bruce Kuenzel (662-6493, 412-3013) Pastor John Bell (505-500-5951)



Focus on Ministry

Christian Education: Every Member A Lifelong Learner
contributions from Nathan Phillips, Ethan Clements, Mandy Ferran, Cynthia Kuenzel, Tonie Dunham, Todd Urbatsch and Isa Spoonheim

Rally Day

Hi this is Nate and Ethan here to tell you about: Fun, Games, Exciting, Prizes, ...and don't forget Cake!

Mark the date, September 11th, Rally Day is around the corner. On September 11th between services we will be kicking off the Sunday School year with fun and games. There will be balloon animals, face painting, games, and back by popular demand a **cake walk**.

We need your help. We would like the youth to work games but any adults who want to bake for the cake walk would be appreciated. If you would like to help you can contact Nate Phillips at nateski95@gmail.com or we will have a sign up sheet in between services.

Sunday School for 2yrs - Gr 6

We will be holding a Sunday School Opening in the Sanctuary prior to the children going to their appointed rotation room.

This fall we will start using a new Sunday School curriculum from Spark (published by Augsburg Fortress). The curriculum and rotational model we have used for the past few years has been successful, but the Sunday School Task Force and the Educational Ministry Team felt the youth were lacking in knowledge about the bible. We're excited about this curriculum because it is very bible centered, and bible skills are imbedded throughout the program. For children ages 2 through 2nd grade there is a special story bible that is used with their study. It has beautiful full color illustrations and large print. For children in 3rd grade through 6th grade there is an NRSV bible designed specifically for them. Throughout their study, they are encouraged to mark in the bibles and to place stickers by verses that speak to them. We are purchasing Sparks Bibles and Story Bibles to be left in the classrooms that can be used by the Sunday School. We will be starting with classroom sets of these bibles, but eventually we would like each student to have their own. We will still be using the rotational model as that seems like the best

fit for our congregations needs. During rotation, the kids will rotate through, "Art, Bible Skills and Games, Computer Lab, Cooking, Creative Drama, Music, Science, and Video experiencing each lesson from a different perspective though out each. Preschoolers experience an in-room rotation with Storytelling, Art, Snack, Music and Game stations (spark website). For the Workshop Leaders and Shepherds, there is supposed to be less preparation and more support. They even have an interactive website available for teachers and parents (<http://www.wactivatefaith.org>). If you have a chance, you should look at the website.

This year we will be doing the following stories: Samuel and Hannah, Solomon Builds the Temple, Daniel and the Lions and Palm Sunday and Easter. Each Sunday there will be an opening in the sanctuary prior to the children going to their appointed rotation room.

We're excited about it, we know the kids will enjoy it and we hope you can be a part of making it successful!

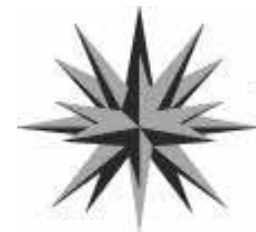
The Children's Education Task Force is working on getting shepherds and workshop leaders for this coming year's Sunday School. We only have the 1st/2nd grades class filled. We are still working on shepherds for the other grade levels and someone to do the 2 yr. olds and 3 yr. olds. If you are interested in Shepherding children during Sunday school or being a Workshop Leader, please contact a member of the Sunday School Task Force (Cynthia Keunzel, Mandy Ferran, Jennifer Hopkins, Diane Starckenburg or Pastor Bell).

What's new for YOUTH?

Middle School and High School will meet Sunday mornings in the new Youth Hall.

Middle School - it's time to tackle the Old Testament! You will be finding out who Moses, Elijah, Elisha, Jonah, David, Joseph, Isaiah, Samuel, Ruth and Esther were and what they did. Pastor Bell will bring his own special touch and humor to these wonderful old stories each week.

High School - The Greatest Story: Jesus You will take the journey with the Jesus of the four Gospels and see how his story connects to your stories with an exciting new study program from Augsburg Fortress. This program is not about memorizing obscure detail or testing prior Bible knowledge, it simply aims to introduce the story through actual storytelling, visual sandart presentations, worship songs, and creative events that reach out to your imagination and spirit.



We Can't Thank People Enough! Thank You:

For all who fold our bulletins each week:
Phyllis Holland – Coordinator
For those who provide communion to our home-bound:

Phyllis Holland – Coordinator

For all who provide food for our home-bound and temporarily disabled family members :

Karen Meier – Coordinator

For all who prepared the August Star for mailing:

(Note: a coordinator is needed for this task. Please call Donna in the office if you will take this on.)

The Family Job Chart



Jobs well done!

As always our Bethlehem family has been busy behind the scenes keeping us ready for anything and caring for each other and others. This month we are aware of some folks who we want to thank for doing what the family of Bethlehem does! Thank you to everyone who contributed to the purchase of 50 new Bibles for the Navajo Mission School, and even more moneys were given and sent on as a donation, your generosity is so welcomed and needed. Thank you again to our 60th anniversary committee for our wonderful 60th weekend celebration which is about to commence at this writing. Did you notice that the Bethlehem Mile has been cleaned? Thanks to Michelle Thomsen, Lore Ethridge, Laurel Roberts, Denise Dey, Louise Hanna, Dell Rauber and double thanks to Thelma and Dale Hahn, seen cleaning on two separate occasions.

This month we also wish to thank Mike Olcott for the Faith Chest we were able to present to Liam Alexander Takas, grandson of Jo Ferdinand, at his baptism.

Our houseplants also want to thank Brenda Robertson, Betty Myers, and Barbara Yarnell for the repotting, washing, pruning and general caring that they received this month, and a big thank you to Haru Takeda for faithfully watering them each week.

We always say that we are Blessed to Be a Blessing and that is especially true each month as some of our family have generously given of their weekend to help with Building Kindness project; thanks to Pastor Bell, Jerry Ethridge, David Phillips, and Kathy Willcutt for helping out in August. This month we also thank the members of our Church Council who prepared dinner for St. Elizabeth Shelter especially George Anderson, Sophie Click, Jerry Ethridge, Jeff Lloyd,, Glenn Magelssen, Laura McClellan, Jackie Paris - Chitanvis and Michelle Thomsen.

Where would we be without our assembled bulletins each week? Thank you Louise Hanna, Janet Hill, and Valerie and Rene Prestwood for taking care of us this month. You of course are reading this in a newsletter which will be assembled for mailing by someone, and our August Newsletter was sent with the help of Marge Rich, Valerie & Rene Prestwood, George Anderson, and Nancy Maltrud



Happy Birthday to You!

September

This feature has been removed for use on the Web to protect the privacy of the members

Last month we had to bid farewell and Godspeed to our sister and Director of Music, Paula Nichols. Thank you to everyone who participated in the reception and send off for Paula but especially Karin Roberts for having the choir party at her home and choosing and arranging the purchase of the congregations gift to Paula. Thank you also to Sally & Rodger Liljestrand for their help to Karin, and to all members of Paula's choirs for their donations to the reception. (Below see Paula's note to you Bethlehem!)

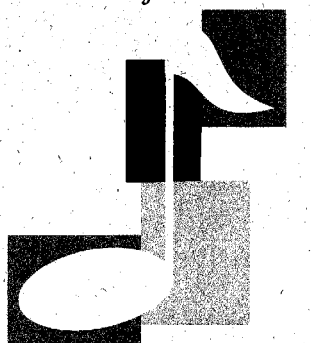
Yes, there are many more, of whom we are unaware, who have helped out and gone the extra 10, we thank you too.

*Bethlehem Friends,
How can I say thank you for the loving farewell you have given to me? I have been overwhelmed by your kindness and generosity, but not surprised - that is simply who you are as a church family. I will cherish the painting in my home, smile at the handbell plaque in my office, and appreciate the choir's gift cards as I drive! But most*

of all I will remember all of you and the love and support you have given to Matt and me and to our family. We love you and will never forget you.

*Love,
Paula*

Note Worthy





Council Corner

Change
By Laura McClellan



As fall starts, we are seeing many changes at Bethlehem, with interim staff and congregational help supporting our Music, and Youth and Family Ministries. We are of course, working to transition to permanent staff, which will mean even more change in our future.

I've heard anxiety expressed from some members of our congregation who perhaps wish that more stable times with permanent staff in place would come to pass sooner rather than later. During such times of change where we hope for a rejoicing future, we pray that God's will may lead us through these changes. There are so many unknowns at times like these. Will we find the right person to lead our Music Ministry and our Youth, Family and Education Ministry? How will we get through the interim periods? Will we find the interim help coupled with congregational support that we need? How do we support our youth during these times of change?

As I write this Council Corner article, I am awaiting my flight in Minneapolis. I am traveling home from SD where I helped organize a baby shower to celebrate the upcoming adoption of my first niece by my sister and brother-in-law, their first child. As they prepare for this major change in their lives, there is much anxiety that comes with hope and joy for future blessings and prayers that all will go well with the birth and the adoption.

As we work through change in our personal and Bethlehem families, we pray for God's blessings and await with anxious anticipation of a joyous future. No one knows what the future holds for our families. I do know that God's will provides us with a future we could never have imagined and our challenges will not be more than we can handle.

Please join me in prayer to thank God for all of our blessings and pray for our Music Ministry Search Committee (Anna Casperson, Bob Chrien, Debbie DeSimone, Lore Ethridge, Eric Ferm, Thelma Hahn, Suzy Koehn, Larry Rybarcyk, Marilyn Stevens, and Lu Williams), Interim Youth and Family Director Search Committee, Spiritual Gifts Coordinator Search Committee, and Call Committee for a Youth, Family, and Education Director.

Blessings my friends,

Laura McClellan, Council President

From the Archives

Both articles featured here were found in the September, 1966 issue of the "Bethlehem Lutheran"

PROPERTY SOON TO BE OFFERED

The government is expected to offer the ground the church leases soon. It is reported that the price is set at \$4,900. The council believes the asking is satisfactory.

All pastors attending the ministerial association reported that they believed the prices set for their ground was acceptable, with the exception that the two churches which are in commercial zones, Trinity Bible and Grace Lutheran, were considerably higher. Grace's appraisal was \$14,000. The ministerial association voted to ask that the appraisal on those two properties be brought in line with the others.

ARCHITECTURAL FIRM RECOMMENDED

The Architect selection Committee has recommended the engagement of the firm of Pacheco and Graham of Albuquerque for the ultimate sanctuary. The committee arrived at this choice by first investigating the customer satisfaction of nine firms. By this it narrowed the list to three which it then interviewed. The committee visited churches of these three in Los Alamos, Santa Fe and Albuquerque. It reported that:

"Pacheco & Graham are a younger firm than the other two. Both principals have advanced degrees with emphasis on church architecture. Mr. Graham would have the primary responsibility for our project. His designs show originality and good technical knowledge. Most important, he has shown a strong desire to relate to our program, and work to a satisfactory design through detailed discussions with the building committee."

Mr. Pacheco is currently designing the Catholic Church in Los Alamos and Chimayo and Mr. Graham is doing All Saints Lutheran in Albuquerque.

The council accepted the recommendation and voted to interview the firm as soon as it has determined the specific assignment for which the architect is to be contracted.

When the congregation adopted the building study report in 1964 it voted to authorize the council to update the study at the time it delivered the report to the architect. That process is underway, with each former chairman reviewing his section and recommending any revisions necessary. It is planned that the restudy will be completed by the October meeting.

The council was authorized by the congregation at the annual meeting to engage an architect for preliminary consultations. The council will probably determine by the time of the November meeting whether there is any need for preliminary consultations. If the building study seems adequately and competently to cover all questions as to need, the cost of preliminary work might be saved. In that case the council would call a congregational meeting to seek authorization to engage an architect for Title I work.

The members of the selection committee were: Robert Jameson, chairman; LeRoy Horpedahl; Ralph Nelson and Garry Schott. On Page 5 find a current remembrance from architect Channel Graham.



Family Preacher's Feature

Month to Month
Pastor John Bell

I have dedicated the major portion of my last two newsletter articles saying goodbye. So as you read this, I am sure that you haven't missed the absurdity of my continued presence. So here's the thing; Bethlehem has not found another person to replace me, and I do not yet have another job. As we both continue the search process, I will continue to serve you on a month to month basis. Though actively looking for other employment, I cannot say that I am disappointed to be spending a few extra months here. My year at Bethlehem has been a great blessing to me. While it has been an eventful year full of trials and tribulation, this has been a place

of continued grace. No doubt, the events of the past year will be imprinted upon our memories for years to come. But what we will remember, I think, is the manner in which this congregation rose to the challenge and met darkness with light. We have experienced the power of forgiveness, as we continued to love those who have disappointed us; at the same time we have been unwilling to compromise the safety of our children. We have identified issues, assessed risk, and developed policies and procedures that protect the young people in our care. I believe our healing has reached a tipping point, in which our focus has again shifted to ministering to others.

As we begin a new program year, there are many signs of new life. Our celebration of sixty years of ministry as a congregation has not left us nostalgically looking to the past. There is a real sense that we have a long and vibrant future ahead. Our Building Kindness project is gaining volunteers from outside the congregation and is moving toward doubling the work projects scheduled. Our youth will enjoy a new Youth Hall, with more space and visibility. At the same time we have beefed up our Youth Fellowship schedule so that youth will consistently meet most Sundays. Next summer, the High School

youth will participate in the National Youth Gathering in New Orleans.

Though there is still some transition ahead, I believe we are gaining momentum. No doubt we will mourn the loss of Paula Nichols and her ministry. Yet it looks as though we will be able to assemble an interim staff that will provide for full programming. I am confident that gifted leadership will come forward for all of our ministry positions.

God is not limited by our fallibility. Where our own abilities meet their limits, God is just beginning his work.

I think that we have had a gift in this year of ministry. That gift is the renewed perspective that this is our Lord's ministry; God is not limited by our fallibility. Where our own abilities meet their limits, God is just beginning his work. Bethlehem has been a good place to be because we trust God to show up. We expect this to be a place where we encounter God's grace and love in a powerful way. Together this year

we have learned the power of Paul's word, "that nothing in all creation can separate us from the love of God, in Jesus Christ our Lord." (Romans 8:38-39) Bathed in this abundance of God's grace, why would I be in any hurry to leave?

Youth Hall Dedication:

The transformation of the Old Fellowship Hall to the new and improved Youth Hall is nearly complete. New carpet and paint as well as a new media center have been installed to create a visible center for our ministries with youth. Join us on Rally Day, September 11th, as we dedicate and show off this new space.

Thanks to the following folks who work hard to transform this space: Nate Phillips, Emma Phillips, Robbie Meitz, Nick Hill, Ethan Clements, Isabelle Coons, Katie Hopkins, Emily Hopkins, Haley Bridgewater, Christina Moore, Emily Lloyd, Emily Johnson, Katie Bridgewater and Larry Rybarcyk.

ACTS OF THE CHURCH

Baptism

August 7 Liam Alexander Takacas



Stars of Bethlehem Churchwide Assembly

Jerry Ethridge

Report from 2011 Churchwide Assembly

I had the privilege to attend the ELCA's Twelfth Churchwide Assembly in Orlando, FL from Aug 15 – 19 as your lay male representative from the Rocky Mountain Synod – the Assembly occurs every two years. This year's theme was *Freed in Christ to Serve*.

To begin with, Lore and I had the joy of sharing a time-share condo in Orlando with Nicole, Ray, Morgan, and Noah Ferry - they send their blessings to all at Bethlehem. While Lore, Ray, and the kids enjoyed Universal Studios and the other attractions the Orlando area offers, Nicole and I attended the Assembly. She and I were two of 1025 lay and non-lay assembly members. There was much debating and many votes taken during the Assembly including those on social statements, Memorials, elections, and recommendations provided by the Church[wide] Council. For the first time, the Assembly was streamed live on ELCA's website [www.ELCA.org] and many more of the details are provided there. I wanted to share three areas that were highlights for me.

After considerable discussion and prayer, the Churchwide Assembly overwhelmingly (96.5%) approved the ELCA's Social Statement on Genetic, Faith, and Responsibility which had been initiated as a memorial by the Northeastern Iowa Synod. Work on the statement began in 2005 and was designed to address 'significant theological, ethical, public, and pastoral challenges arising from the development in genetics . . .' What struck me most was the process by which ELCA Christians engaged in respectful dialogue on such an important (and potentially controversial) issue. Manipulation of genetics can unlock unprecedented power to diagnose and cure diseases and to address agricultural and environmental problems. The task force did a phenomenal job in taking into account many differing viewpoints in crafting the statement. If you have an interest in the ELCA's position on genetics, I encourage all of you to carefully review the social statement – this would make an interesting adult Sunday morning topic. Forthcoming ELCA social statements include *Social Justice* (2013) and *Justice of Women* (2017).

A major initiative launched by the 2011 Churchwide Assembly was the ELCA Malaria Campaign with the objective to contain deaths from malaria in Africa by 2015. Today an African child or adult dies from malaria every 45 seconds! The ELCA Malaria Campaign under the auspices of ELCA World Hunger has set a goal to contribute up to \$15M over the next four years (2011-2015) to achieve the containment goal. The youth of the Rocky Mountain Synod participated with other synods in a pilot program and initiated the ELCA Malaria Campaign this past year. You'll be hearing much more from them as we, together work to raise \$15M.

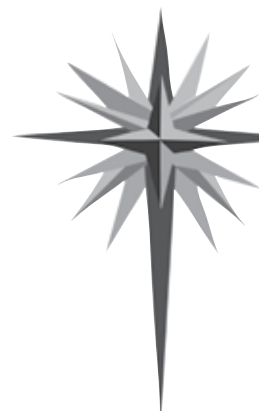
The ELCA (and synods for that matter) is under tremendous economic pressures – congregations are simply incapable of supporting their synods and the Churchwide as they have in the past. As such, the ELCA has made many changes to the way it's organized and how it provides products and services to the 10,000+ ELCA congregations. As you know Churchwide had to lay off 65 workers in 2011 to accommodate the significant reduction in income. In addition, the Assembly approved many ELCA Constitution changes recommended by the Living Into the Future Together (LIFT) Task Force that will provide more effective means of providing churchwide governance – including moving to a triennial assembly schedule starting after the 2013 Churchwide Assembly planned for August in Pittsburgh, PA.

Finally, I want to thank you for allowing me to represent you at the Assembly. While a lot of 'administrative' work was accomplished, there was an equal amount of uplifting components to the assembly. Worship and Bible Study were part of the daily routine. I truly felt encouraged for the future of the ELCA, both by what it holds up as priorities, and the strong spiritual component of everything we do. Should you have an opportunity to participate in a future Churchwide Assembly, I would strongly encourage it.

I realize this report is brief, but should any of you have any questions about the Assembly, please don't hesitate to ask. I would also encourage you to review the ELCA website if you want more information.



**Evangelical Lutheran
Church in America**
God's work. Our hands.



FYI Remembering BETHLEHEM LUTHERAN CHURCH 1966-69

*by Channel Graham,
architect*

My journey to become the architect for the Bethlehem Lutheran Church sanctuary really started in graduate architectural school at Cranbrook Academy of Art in Bloomfield Hills, Michigan in 1959. I had helped to design a synagogue with my former employer, Alden B. Dow of Midland, Michigan and had learned some of the design requirements relating to Jewish worship. So, for my graduate thesis project, I chose to design a synagogue in downtown Detroit.

Cranbrook is a unique school with a small enrollment and an outstanding faculty. The departments (studios) included sculpture, painting, ceramics, weaving, metalwork, and architecture, all on a graduate level. Exposure to the arts that were offered there changed my life. It was an academic year filled with lectures from world famous artists and architects.

Along with my major in architecture I took a minor in sculpture. My late wife majored in painting with a minor in sculpture. Early on, I planned to "commis-



sion" my fellow students to design some elements of the synagogue. A weaver designed frontals for the Bimah, a sculptor a screen for the auditorium. For me, the basic idea of integrating art into architecture is to offer a statement of personality—something made by hand that complements the architectural space and the function of the project.

After Cranbrook we decided to move to New Mexico or Arizona. I formed a partnership with Jessie Pacheco when we were both employees of the Bureau of Indian Affairs engineering and architecture office in Albuquerque. Soon after leaving the BIA our partnership was re-

tained by the Pastor of Immaculate Heart of Mary in Los Alamos to design a new sanctuary, a project that was designed by Jessie Pacheco. During that period we were interviewed and selected for the design of the new Bethlehem Lutheran sanctuary.

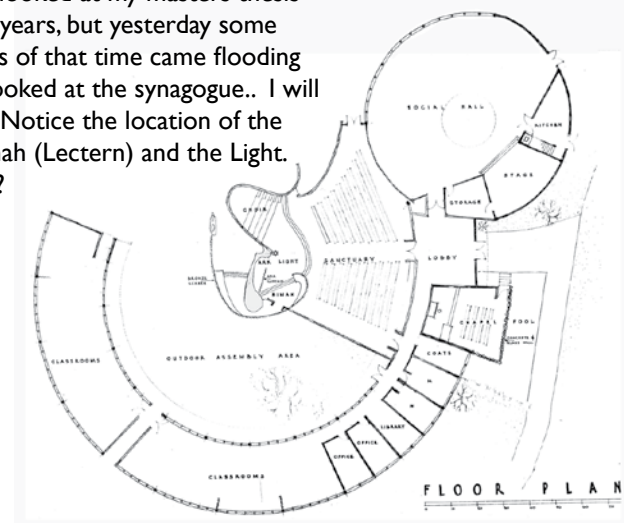
Here was a chance to carry out many of the ideas that I had fostered at Cranbrook. I was dealing with a very intelligent building committee that responded to design ideas with a good critical approach. They laid out basic goals and program requirements without attempting to design the project. I was also dealing with the home office of the American Lutheran Synod. The building committee had a design program in hand. It included the statement that "the choir of the church was a principal instrument of worship", and they wanted an ample nave platform for performances and other functions. Music and the spoken word were both important aspects of the future design.

I sincerely believe that the sanctuary design is one of my most creative of my 25 years of professional practice. The building was designed from inside-out with the placement of the "cave" for the choir forming the governing element of the space.

2/9/11

Hi Tonie,

I had not looked at my masters thesis book in many years, but yesterday some of my thoughts of that time came flooding back when I looked at the synagogue.. I will attach a plan. Notice the location of the Choir, the Bimah (Lectern) and the Light. Look familiar??
chan.





Youth

Youth includes all our school age kids. This is the place to see what is going on with/and for them

and Family

Family includes YOU and you and you and you too

Ministries

www.bethluth.com

Tweens

Fellowship each Wednesday that school is in session:
Meet at Bethlehem at 12:00 pm (or when you arrive)
Cook and eat lunch together
Have a great outing, activity or service project
Finish up at 3:30
Who? Everyone from 4th - 6th Grade
Need a ride to or from Tweens? call the office - 662-5151

Middle School

Youth Fellowship
5:00 pm - 2nd, 3rd and 4th Sundays
6:00 pm - Youth Supper on 2nd and 4th Sundays

On each 3rd Sunday a special outing, activity, or service project will be planned for all MS and HS youth

Sunday mornings head to the Youth Hall for a study of the Old Testament with Pastor Bell

High School

Youth Fellowship
5:00 pm - 1st Sundays - Get Off the Hill Dinner
6:00 pm - Youth Supper 2nd and 4th Sundays
5:00 pm - 3rd Sundays
On each 3rd Sunday a special outing, activity, or service project will be planned for all MS and HS youth

Sunday mornings head to the Youth Hall for a new study "The Greatest Story: Jesus" coffee, cocoa & donuts provided



Hot dog cooking at ice cream social 2010

WHAT'S NEW FOR YOUTH AND FAMILY?

September 17, Saturday - Hot dog & ice cream social with special musical guest, James Hersch

October 20th, Thursday, - 2nd Annual Pie Festival

November 20th, Sunday, - Advent Workshop with Breakfast burritos

December 2011

Dec 3rd -Saturday ,Light parade

Dec 10th - Saturday, Tree hunt/ chili making(youth fundraising event)

Dec 11th - Sunday, Christmas program, Chili supper fund raiser, caroling



Pie Fest 2010

January 16th 2012- Monday- Every Buddies Birthday Celebration



Every Buddies Birthday 2011

March 17th, Saturday - St. Patrick's Day, "Spud Night", Celebration

April 8th, Sunday - Easter brunch and egg hunt



Lenten Workshop 2011

Family Fellowship September 17 A Night of Music and Fun

For the whole Bethlehem family!!!
Sept. 17 - 5:00pm - Hot Dogs and Ice Cream Social

Followed by special musical guest James Hersch in an intimate coffee house style concert. Check the "Star" for details about our guest and stay "tuned" for more information in the Parish Notes and on the website under Announcements.

James Hersch

"I have never seen an audience laugh and cry so much during one performance." - Boise State University

"His ability to touch each patient with a song that seemed especially chosen for that person was uncanny. Please extend to the members of Yavapai College our thanks for sponsoring Mr. Hersch at our facility." - Veterans Affairs Hospital, Prescott, AZ

"While others play cover songs or have become comedian-musicians, James has remained true to his own music. Now others on the college circuit perform his music as well." - Carthage College, Kenosha, WI

"I was moved by the positive impact [James] had on the people we saw in the community. From age 5 to 95, James has a way of reaching into an audience's heart." - Centralia College, Centralia, WA



For over thirty years acclaimed writer, singer and guitarist James Hersch has been quietly building a repertoire of work that puts him squarely on the forefront of acoustic music's importance in North American culture.

James has a rare mixture of straight forward musical talent, humor and sensitivity that allows him to create songs that speak to what is common in all of us. He is one of those few performers who allow his listener to experience his music through intimate images which confront and celebrate today's human condition.

Although James has a Bachelor of Arts degree in classical guitar, his song writing is based on common themes that are broadly appealing. Hersch performs as a solo acoustic artist and his music has taken on a life of it's own, deeply planted in the minds of the thousands who hear him each year.

A native Minnesotan, Hersch has twelve album credits to his name, including two children's recordings and two musical scores for documentary films. He recently received a "Telly Award" for his original music in "Paving the Way", seen on PBS stations nationally. His compact disc releases include songs about the farm and the city, the school teacher and the paper boy. In 1997, he was selected by the National Association for Campus Activities to be the recipient of it's annual Harry Chapin Award for Contributions to Humanity. He has also been nominated National Coffeehouse Entertainer of the Year several times by the NACA, and has been a finalist at the international Kerrville Folk Festival.

Most recently, James undertook to write, record and publish one song per week for 52 weeks. He concluded his "52 Songs in 52 Weeks" project on December 24th, 2009 and published an album of songs most favored by those who followed the project online. His 16 song CD, "52 Songs" is available on iTunes and CD Baby, or heard at reachwithme.com.

REACH WITH ME, an outreach residency program Hersch founded in 1994, has become a favorite among colleges and communities nationwide. James' musical artistry provides the opportunity for interactive, inter-generational gatherings in communities.